

09

LYNK&CO

English



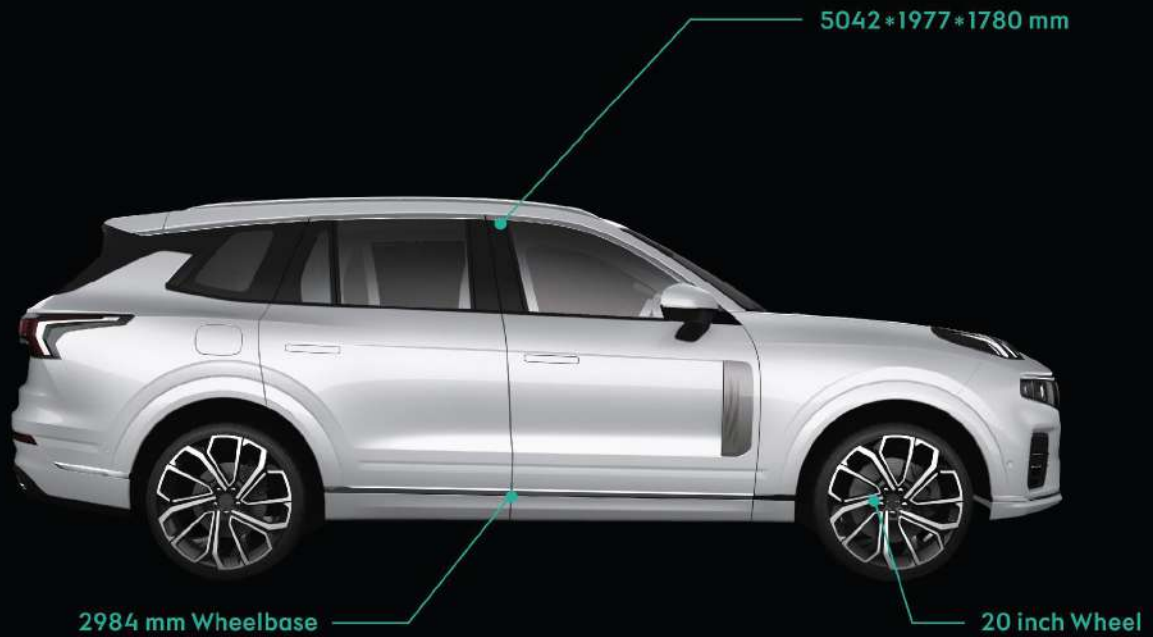
**09** VOYAGE  
FOR LEGEND



# Aesthetics for the Visionaries

Similar to the perpetually shifting tapestry of a bustling metropolis, Lynk & Co's Mega-city contrast design resembles the true nature of the 09.

In the case of Lynk & Co 09, this transformation is exemplified by the bold deconstructivist elements that define the new urban style.



## Urban Coast Front

Inspired by the dynamic yet serene coastlines of metropolises, the front fascia ingeniously adopts the design of dual decorative lines and effortlessly fuses power and elegance.



## Daytime Running Lights

Captivating lights inspired by nature's spectacle, painting the urban canvas with enchanting radiance.



## LED Rear Combination Lamps

Crystals illuminated as the night falls, providing unlimited energy in the modern urban.



## Your Own First-Class Cabin

Where intuitive technology meets luxury design. With Lynk & Co 09, always travel in comfort and ease.

### Futuristic Interface

The sleek interface offers a dynamic, immersive, and intuitive experience.



12.8 inch full-color W-HUD



14 Speakers BOSE Audio



Real Aluminum Trim



12+6 inch Touchable Center Panel

## Boundless Capacity

Embrace the open road with abundant legroom and cargo capacity.

### Space

The spacious boot of this vehicle adapts to your versatile lifestyle, making it ideal for business people and families alike, and more.

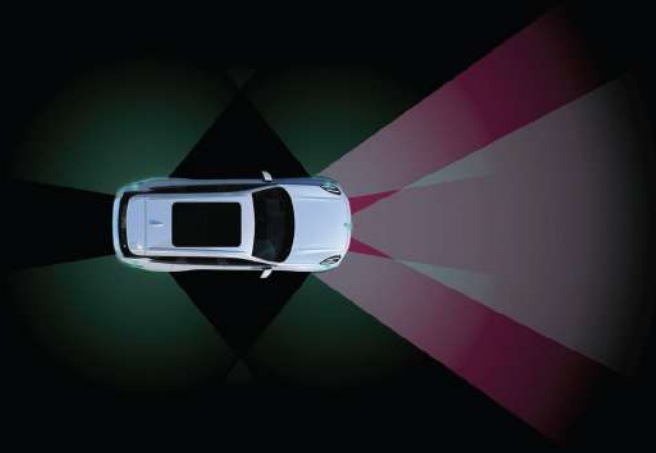
### Outstanding Comfort

Revel in ultimate seating comfort with Nappa leather seats, plush headrests, and luxurious legrests on every journey.



# Seamless Control at Your Fingertips

Human-centered technology that simplifies the complexities of city traffic. Elevate your driving experience with our state-of-the-art assistive technology.



## 23 Advanced Sensors

Equipped with 23 high-performance perception hardware components.

5 millimeter-wave radars

Front single-camera system

12 ultrasonic radars

Driver state monitoring camera

4 high-definition surround-view cameras

## Intelligent Driving Assistance System

Explore peak automotive intelligence with 23 Advanced Driving Assists, offering unmatched convenience on your journey.



## 23 Advanced Driving Assistance

### Highway Assistant

Make highway driving easier and stress-free

### Evasive Maneuver Assist

Help you stay safe and agile in critical situations

### Front Cross Traffic Alert

Intelligent front cross traffic detection



## Connect to Your Digital Hub

Enhance your drive with Apple CarPlay and Android Auto. Navigate, make calls, message, and enjoy music through your car's display.



## 5 Driving Modes



Eco Sports Comfort Off-road Individual

# Dominance Across All Terrains

The Lynk & Co 09 excels in overcoming challenges with its powerful engine, smart all-wheel drive, and precise engineering. It offers an exhilarating and responsive driving experience, whether on city streets or rough terrain, providing boundless freedom.

## World Class Chassis

Reinforced with 48% aluminum components, the Lynk & Co 09 enhances its structural strength, and equipped with advanced front double-wishbone and rear multi-link independent suspension.



## Drive-E 2.0TD T5 Turbo Engine & BSG

**254Ps, 350 N·m**

Paired with 48V BSG Mild Hybrid System

Achieving smooth start, responsive acceleration, and enhanced fuel efficiency.





## 8-Speed Automatic Transmission

The Lynk & Co 09 offers smooth gear shifting, strong low-gear power, and fuel economy in higher gears.

## SPA (Scalable Product Architecture)

Developed by Volvo, SPA technology defines Lynk & Co's luxury and digital experience, driving electrification and smart technology adoption.

# Safety

## All-rounded Protection

Comprehensive safety features to protect what matters most to you.



## High Protection Airbags

Protection for occupants in every row, in addition to the front airbags and front side airbags.

## Air Purifying System

Breathe in the clean and fresh air as the Air Purifying System creates a healthy and refreshing cabin environment.

**AQS (Air Quality System)**  
**PM2.5 Air Quality Monitor**



## Lynk & Co 09 FEATURE LIST

Model	Lynk & Co 09		
	Pro	Halo	Ultra
<b>Performance Parameters</b>			
Engine	Drive-E 2.0TD T5 Turbo + BSG		
Maximum Power (Ps/kW@rpm)	254/187@5500		
Maximum Torque (N·m@rpm)	350@1800-4800		
Top Speed (km/h)	215		
Transmission	8-speed Automatic Transmission		
Drive Type	AWD (All Wheel Drive)		
Suspension (Front/Rear)	SLA Suspension /Multi-link		
Steering System	EPAS (Electric Power Assisted System)		
Tire Size	275/45 R20		
Length*Width*Height (mm)	5042*1977*1780		
Wheelbase (mm)	2984		
Ground Clearance (mm)	221		
Curb Weight (kg)	2120		
Fuel Consumption (km/L)	12.6		
<b>ADAS (Advanced Driving Assistance System)</b>			
EPB (Electronic Parking Brake)	●	●	●
Auto Hold	●	●	●
Electronic Gear Shifter	●	●	●
Smart Start & Stop System	●	●	●
Drive Mode Selection	Eco/Sports/Comfort/ Off-road/Individual	Eco/Sports/Comfort/ Off-road/Individual	Eco/Sports/Comfort/ Off-road/Individual
ACCQA (Adaptive Cruise Control with Queuing Assistant)	●	●	●
HWA (Highway Assistant)	●	●	●
DOW (Door Open Warning)	-	●	●
AEB (Autonomous Emergency Breaking) with Pedestrian Detection	●	●	●
FCW (Forward Collision Warning)	●	●	●
AHB-C (Active High Beam-Control)	●	●	●
LDW (Lane Departure Warning)	●	●	●
LKA (Lane Keeping Assistant)	●	●	●
ELKA base (Emergency Lane Keeping Assistant)	●	●	●
ELKA plus (Emergency Lane Keeping Assistant plus) with Rear Car Detection	-	●	●
BSD (Blind Spot Detection)	-	●	●
CVW (Closing Vehicle Warning)	-	●	●
LCA (Lane Change Assist)	-	●	●
RCTA (Rear Cross Traffic Alert)	-	●	●
CMSR (Collision Mitigation Support Rear)	-	●	●
EMA (Evasive Maneuver Assist)	-	●	●
FCTA (Front Cross Traffic Alert)	-	●	●
DPS (Driver Performance Support)	-	●	●
APA (Autonomous Parking)	-	●	●
360° View System	●	●	●
Rear Parking Sensors	●	●	●
Front Parking Sensors	●	●	●
ESP 9.3 (Electronic Stability Program)	●	●	●
CBC (Cornering Brake Control)	●	●	●
HDC (Hill Descent Control)	●	●	●

Model	Lynk & Co 09		
	Pro	Halo	Ultra
HSA (Hill Start Assistant)	●	●	●
TPMS (Tire Pressure Monitoring System)	●	●	●
ARP (Anti Roll-over Protection)	●	●	●
<b>Exterior</b>			
"Aurora Borealis" Daytime Running Lights	●	●	●
Full LED Headlights (High & Low Beam)	●	●	●
AFS (Adaptive Front-lighting System)	●	●	●
Front Headlights Height Auto Adjustment	●	●	●
Automatic Headlights (On/Off)	●	●	●
Follow Me Home (Headlight Off Delay)	●	●	●
"Energy Cube" LED Rear Combination Lamps	●	●	●
Rear LED Fog Lamp	●	●	●
Panoramic Canopy	●	●	●
Openable Panoramic Sunroof	●	●	●
Front Door Acoustic Glass	●	●	●
Rain Sensor Auto Wiper	●	●	●
OSRVM (Outside Rear-view Mirror) Heated & Foldable	●	●	●
Memory Function of OSRVM	-	●	●
OSRVM with Tilt Down when Parking	-	●	●
Roof Rails	●	●	●
Polishing Dual Exhaust Pipe	●	●	●
<b>Interior</b>			
Steering Wheel 4-way Manual Adjustment	●	●	-
Steering Wheel 4-way Power Adjustment	-	-	●
Steering Wheel Material	Genuine Leather	Genuine Leather	Genuine Leather
LED Ambient Light	-	●	●
Dual Zone Automatic A/C	●	●	-
4 Zone Automatic A/C	-	-	●
ISRV (Inside Rear-view Mirror) - Auto Dimming	●	●	●
Seats Material	NAPPA	NAPPA	NAPPA
Driver Seat Adjustment	6-way Power Adjustment	8-way Power Adjustment	8-way Power Adjustment
Passenger Seat Adjustment	6-way Power Adjustment	8-way Power Adjustment	8-way Power Adjustment
Front Seats Massage	-	-	●
Driver Easy Entry	-	●	●
4-way Power Lumbar Support	-	●	●
Front Seats 2-way Manual Headrest	●	●	●
Comfort Headrest	-	-	●
Front Seats - Ventilation Function	-	●	●
Driver Seat - Memory Function	-	●	●
Front Seats - Heated Function	-	-	●
Front Seats Bolster Adjustment	-	-	Power Adjustment (Back Side)
Front Seats Cushion extensions adjustment	-	-	Power Adjustment
60:40 Fold Down Second Row Seats	●	●	●
Second Row Center Armrest with 2 Integrated Cupholders	●	●	●
Third Row Power Folding	-	-	●
<b>Comfort and Safety</b>			
Keyless Entry	●	●	●
Keyless Start	●	●	●

Model	Lynk & Co 09		
	Pro	Halo	Ultra
Power Window (with Anti-Pinch)	●	●	●
AQS (Air Quality System)	-	●	●
PM2.5 Air Quality Monitor	●	●	●
Second Roll Air Vent	●	●	●
Third Roll Air Vent	●	●	●
Power Tailgate	●	●	●
Cooling Glovebox	●	●	●
Front Airbags (Driver & Passenger)	●	●	●
Front Side Airbags	●	●	●
Side Curtain Airbags	●	●	●
Front Seatbelt Reminder	●	●	●
Front Seatbelt - Height Adjustable	●	●	●
Front Seatbelt - Pre-tension	-	●	●
ISO-FIX	●	●	●
Vehicle Theft Notification and Tracking	●	●	●
High-strength Body Structure	●	●	●
Chassis Armor	●	●	●
Smart Connectivity & Infotainment System			
12.3-in. HD Digital Instrument Cluster	●	●	●
Touchable Center Stack	12-in. UP Screen+6-in. LW Screen	12-in. UP Screen+6-in. LW Screen	12-in. UP Screen+6-in. LW Screen
HUD (Head Up Display)	-	●	●
Number of Speakers	10	14	14
BOSE Audio	-	●	●
Wireless Charging	●	●	●
Phone Connection	● (Apple CarPlay/Android Auto)	● (Apple CarPlay/Android Auto)	● (Apple CarPlay/Android Auto)
Bluetooth	●	●	●
Radio AM/FM	●	●	●
USB Jacks (Type A-3 & Type C-2)	●	●	●
USB Jack for DVR	●	●	●
Front Row 12V Outlet	●	●	●
Trunk 12V Outlet	●	●	●

Key 1: The Lynk & Co 09 feature list presented herein is based on data available when it's printed and subject to change without prior notice. Specifications may vary in some cases, please consult your local dealer for details.

Key 2: ● = Standard; - = Not Available

# LYNK & CO



MOBILITY AUTO  
التنقل للسيارات

 lynkcooman.com  7161137

 Showroom: Ghala Heights, Muscat

    @Lynkcooman